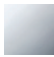

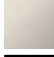


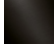


25 023 360



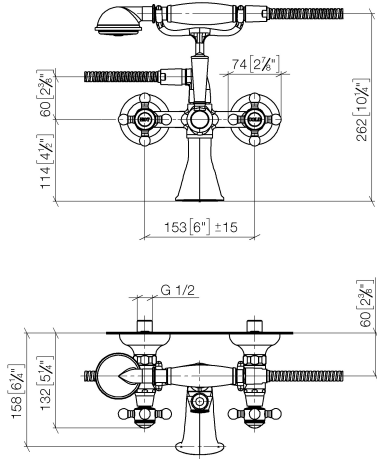
- 160mm projection
- Hand shower: COMPACT RAIN, max. flow rate 6.8 l/min (at 3 bar)
- spout: rectangular normal flow
- wall bracket
- rotary diverter for bath/shower
- rosette Ø 70 mm
- 1/2" connection
- gauge 153 mm
- metal shower hose 1250mm with integrated anti-twist protection
- max. spout flow rate 26 l/min

Intrinsic protection against back flow.

	Chrome	25 023 360-00 0050
	Brushed Platinum	25 023 360-06 0050
	Platinum	25 023 360-08 0050
	Durabress (23kt Gold)	25 023 360-09 0050
	Brushed Durabress (23kt Gold)	25 023 360-28 0050
	Brushed Dark Platinum	25 023 360-99 0050

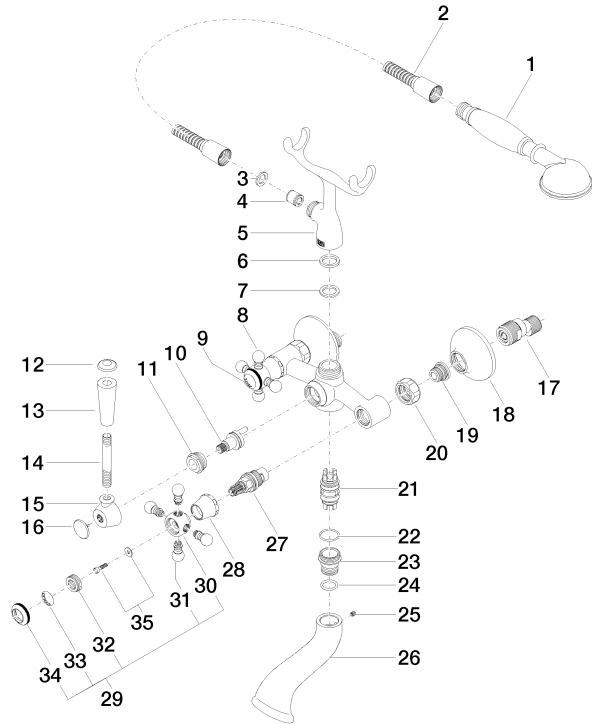
25 023 360

mm [inches]



25 023 360

Parts for other finishes can be found here: [Brushed](#)
[Platinum](#)



25 023 360

Spare parts list

No.	Item Number	Name	Quantity used	Delivery time
1	28 002 970-00 0050	MADISON Metal hand shower with porcelain insert (white) - Chrome	1	10
2	28 104 970-00	Metal shower hose 1/2" x 1/2" x 1250 mm - Chrome	1	2
3	90 14 20 002 00 90	seal	1	2
4	90 23 01 141 00 90	back-flow preventer	1	2
5	09 17 20 010-00	holder	1	60
6	09 14 05 008 90	seal	1	2
7	09 14 20 010 90	seal	1	2
8	04 20 36 002 07-00	handle (hot)	1	10
9	09 26 01 011 90	accessories	1	2
10	90 15 01 001 00 90	diverter	1	2
11	09 23 10 007 90	nut	1	2
12	09 30 30 062-00	screw	1	10
13	11 170 370-00	MADISON Lever insert - Chrome	1	10
14	09 28 22 013 90	pipe	1	2
15	09 18 20 011-00	base	1	10
16	09 30 30 064-00	screw	1	10
17	04 11 04 030 00 90	connection	2	2
18	09 27 39 010-00	rosette	2	10
19	04 29 05 014 00 90	nipple	2	2
20	09 23 30 010-00	nut	2	10
21	90 21 10 010 00 90	insert	1	2
22	90 14 10 056 00 90	seal	1	2
23	09 24 03 123 20 90	nipple	1	2
24	09 14 10 022 90	seal	1	2
25	90 31 11 030 00 90	pin	1	2
26	09 11 06 033 20-00	spout	1	10
27	90 90 03 131 00 90	top	2	2
28	09 21 02 055-00	cover	2	10
29	04 20 36 002 06-00	handle (cold)	1	10
30	09 20 36 002-00	handle	2	10
31	09 20 36 004-00	handle	8	10
32	09 20 83 006 90	handle	2	2
33	09 26 01 010 90	accessories	1	2
34	09 20 36 005-00	handle	2	10
35	04 30 30 029 00 90	fixing set	2	2